

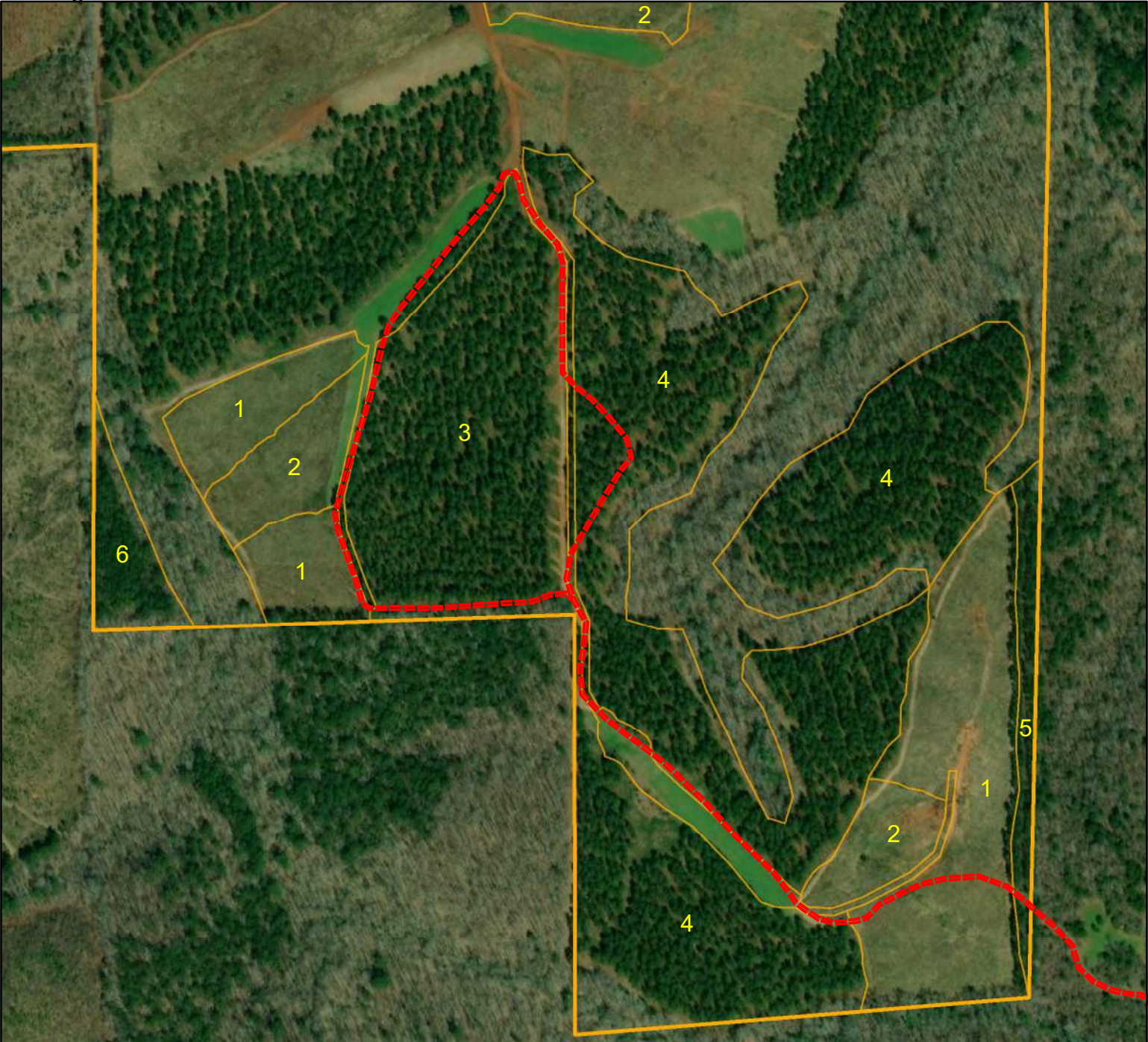


AFOA Forestry Field Tour- July 22, 2020

“Forest Management: Making the best decisions for YOUR objectives”

- Landowner objectives for the property: 1) Wildlife 2) Aesthetics, and 3) Timber
 - to promote quality turkey, quail and deer habitat through good forest management
- All pine plantations were densely stocked, approximately 14 years old at first thinning
- First thinned in 2010
 - objective to open canopy and get food/cover on the ground for wildlife and to promote growth of residual pines
- Mid-rotation herbicide treatment
 - To control sweetgum and midstory hardwood competition, good for wildlife and timber production- \$50-\$65 per acre depending on prescription and application methods
- Second thinning and patch clear cuts in 2015
 - objective to avoid canopy closure for wildlife and promote tree growth, patch clear cuts for diversity, nesting, bedding cover.
- Longleaf plantings-chosen for wildlife benefits, early prescribed burning
 - Site prep 2016, planted 2017
 - Approximate cost
 - Herbicide \$85/acre
 - Prescribed Burning/Firebreaks \$50/acre
 - Container longleaf seedlings \$110/acre
 - Planting labor \$60/acre
 - Total cost = \$305/acre, 544 trees/acre
 - Possible cost-share opportunities through NRCS, longleaf alliance
 - Herbaceous weed control spring after planting
- Extensive inventory July 2020 to project and evaluate growth rates and internal rate of return
- Prescribed burning on a 2-4 year return interval, checkerboard across landscape
 - Winter versus growing season burning depending on objectives

Forest Management Activities Map
Tallapoosa County, AL



--- Tour path

AFOA tour map

STAND_DESC, Comments

- 1, 2017 Longleaf planting-burned winter 2019
- 2, Herbicide only-early successional habitat
- 3, 1996 Loblolly-Thinned Twice- Herbicide-Winter Burn 2020
- 4, 1996 Loblolly-Thinned Twice-Herbicide,-June Burn 2020
- 5, 1996 Loblolly-Thinned Once
- 6, 1996 Loblolly-Unthinned

Pine Plantation Management Presentation AFOA Field Tour
2/22/2020

Stand Identification

Client Name	AFOA	Establishment Cost	\$200 per acre 1996
County	Tallapoosa	Annual Operating Cost	\$5.00 per acre
Estab. Date	1/15/1996	Recreation Income	\$8.00 per acre
Site Quality	70 Feet		

Harvest Product Rates

\$7.00 \$14.50 \$20.00

Stand Name		Loblolly Plantation Age 25 Unthinned				Yield Unit: OB Green Tons			PW		CNS		PST				
Year	Age	Dom Ht (feet)	Trees/ Acre	BA/ Acre	QMD (inches)	Total Yield	Tot. Gr. Rate	Topwood Yield	Pulpwood Yield	PW & TW Gr. Rate	Chip-N-Saw Yield	Gr. Rate	Sawtimber Yield	Gr. Rate	Value Per Acre	Internal Rate of Return	
2021	25	71.2	610.0	219.9	8.1	184.3		3.5	135.6	0.0	45.2	0.0	0.0	0.0	\$1,629.10	9.50%	
2022	26	73.0	585.5	221.7	8.3	190.4	3.31%	4.0	132.5	-2.29%	53.9	19.25%	0.0	0.0	\$1,737.05	9.40%	
2023	27	74.8	562.2	223.0	8.5	196.0	2.94%	4.6	129.0	-2.64%	62.4	15.77%	0.0	0.0	\$1,840.00	9.28%	
2024	28	76.6	540.1	223.9	8.7	201.1	2.60%	5.1	125.3	-2.87%	70.7	13.30%	0.0	0.0	\$1,937.95	9.15%	
2025	29	78.3	519.0	224.4	8.9	205.8	2.34%	5.7	121.3	-3.19%	78.8	11.46%	0.0	0.0	\$2,031.60	9.01%	
2026	30	80.0	499.0	224.7	9.1	210.1	2.09%	6.2	117.2	-3.38%	86.8	10.15%	0.0	0.0	\$2,122.40	8.87%	

Stand Name		Loblolly Plantation Age 25 Thinned at Age 14				Yield Unit: OB Green Tons				Thinned 46.55 Tons Per Acre pulpwood \$279.32 per Acre							Internal Rate of Return
Year	Age	Dom Ht (feet)	Trees/ Acre	BA/ Acre	QMD (inches)	Total Yield	Tot. Gr. Rate	Topwood Yield	Pulpwood Yield	PW & TW Gr. Rate	Chip-N-Saw Yield	Gr. Rate	Sawtimber Yield	Gr. Rate	Value Per Acre		
2021	25	68.7	255.0	99.8	8.5	80.6		1.8	56.5	0.0	22.4	0.0	0.0	0.0	\$732.90	9.03%	
2022	26	70.5	252.0	104.0	8.7	85.9	6.58%	2.4	52.4	-7.26%	31.1	38.84%	0.0	0.0	\$834.55	9.15%	
2023	27	72.2	249.0	107.8	8.9	90.9	5.82%	3.1	48.4	-7.63%	39.5	27.01%	0.0	0.0	\$933.25	9.22%	
2024	28	73.9	245.9	111.2	9.1	95.7	5.28%	3.7	44.4	-8.26%	47.6	20.51%	0.0	0.0	\$1,026.90	9.25%	
2025	29	75.5	242.9	114.4	9.3	100.3	4.81%	4.3	40.6	-8.56%	55.4	16.39%	0.0	0.0	\$1,117.60	9.24%	
2026	30	77.1	239.9	117.8	9.5	105.2	4.89%	5.0	36.7	-9.61%	62.6	13.00%	0.0	0.0	\$1,199.60	9.24%	

Stand Name		Loblolly Plantation Age 25 Thinned at Age 14 and 19					Thinned 30 Tons Pulpwood and 5 Tons C-N-S per acre, \$284.40 per Acre									
Year	Age	Dom Ht (feet)	Trees/ Acre	BA/ Acre	QMD (inches)	Total Yield	Tot. Gr. Rate	Topwood Yield	Pulpwood Yield	PW & TW Gr. Rate	Chip-N-Saw Yield	Gr. Rate	Sawtimber Yield	Gr. Rate	Value Per Acre	Internal Rate of Return
2021	25	72.8	109.0	76.5	11.3	63.8		6.0	2.8	0.0	40.7	0.0	14.4	0.0	\$939.75	11.06%
2022	26	74.7	109.0	80.2	11.6	69.1	8.31%	6.4	3.0	7.14%	41.9	2.95%	17.8	23.61%	\$1,029.35	11.03%
2023	27	76.5	109.0	83.6	11.9	74.3	7.53%	6.9	3.2	6.67%	43.0	2.63%	21.1	18.54%	\$1,116.20	10.99%
2024	28	78.3	108.9	86.7	12.1	79.3	6.73%	7.4	3.4	6.25%	44.1	2.56%	24.4	15.64%	\$1,203.05	10.94%
2025	29	80.1	108.9	89.9	12.3	84.4	6.43%	7.8	3.6	5.88%	45.2	2.49%	27.8	13.93%	\$1,291.20	10.88%
2026	30	81.8	108.9	93.5	12.6	89.8	6.40%	8.7	3.9	8.33%	42.9	-5.09%	34.2	23.02%	\$1,394.25	10.83%

If Chip-N-Saw and sawtimber prices Increase \$2.00 per ton in by 2026 comparable values and return

\$1,548.45 11.03%

If Chip-N-Saw and sawtimber prices Increase \$4.00 per ton in by 2026 comparable values and return

\$1,702.65 11.22%

If Chip-N-Saw and sawtimber prices Increase to current Northeast Florida Prices

\$2,376.80 11.92%

2020 Timber Inventory